



TEAM OREGON

Motorcycle Safety Program

F2F vs. eRider™ Online Classroom

Basic Motorcycle Rider Training

Status: 13,000 per year

Required by law

Hands-on: 8 hours

Classroom: 7 hours



Pat Hahn, 541-737-9113, pat.hahn@oregonstate.edu

Development Principles

1. National standards
2. Data-driven priorities
 - Scanning
 - Risk awareness
 - Riding gear
 - Riding strategy
 - Judgment
 - Vehicle control skills
 - Impairment
 - Group riding



Development Principles

Three types of information:

N _____

Need to know

N _____

Nice to know

N _____

NOISE



N _____

Need to know now

Pat Hahn

MY DASHBOARD



MY COURSE



- ✓ CH 1 Riding Gear
- ✓ CH 2 Motorcycle Controls
- ✓ CH 3 Taking Control
- ✓ CH 4 Riding Skills
- CH 5 Riding in the Real World
- CH 6 Ready to Ride



0% progress 100%

MY ACCOUNT



PROVIDE FEEDBACK



LOG OUT



Chapter 3 of 6 Taking Control - Lane Positioning and Visibility



Save and Exit

Click 'Start' to watch the video.



Next

Text On

Text Off

Pat Hahn, 541-737-9113, pat.hahn@oregonstate.edu

Pat Hahn

MY DASHBOARD

MY COURSE

- ✓ CH 1 Riding Gear
- ✓ CH 2 Motorcycle Controls
- ✓ CH 3 Taking Control
- ✓ CH 4 Riding Skills
- CH 5 Riding in the Real World
- CH 6 Ready to Ride



0% progress 100%

MY ACCOUNT

PROVIDE FEEDBACK

LOG OUT

Chapter 4 of 6 Riding Skills - Cornering: Introduction



Save and Exit

Click 'Start' to watch the video, then follow the directions to review cornering.



Study the tree lines or utility poles - which way does the curve go? Look for clues to where the exit leads.

Approach

Tree Lines

Signs

Slow

Speed

Position

Surface

All set?

Next

Text On

Text Off

Pat Hahn

MY DASHBOARD

MY COURSE

- ✓ CH 1 Riding Gear
- ✓ CH 2 Motorcycle Controls
- ✓ CH 3 Taking Control
- ✓ CH 4 Riding Skills
- CH 5 Riding in the Real World
- CH 6 Ready to Ride



0% progress 100%

MY ACCOUNT

PROVIDE FEEDBACK

LOG OUT

Chapter 4 of 6 Riding Skills - Cornering: Introduction



Save and Exit

Click 'Start' to watch the video, then follow the directions to review cornering.



Position - choose the best lane position to see through the corner - enter from the outside of the turn.

Approach

Tree Lines

Signs

Slow

Speed

Position

Surface

All set?

Next

Text On

Text Off

Save and Exit

Chapter 4 of 6 Riding Skills - Cornering: Countersteering



Click 'Start' to watch the video, then click on the handlebars to demonstrate countersteering.



Next

Pat Hahn

MY DASHBOARD

MY COURSE

- ✓ CH 1 Riding Gear
- ✓ CH 2 Motorcycle Controls
- ✓ CH 3 Taking Control
- ✓ CH 4 Riding Skills
- CH 5 Riding in the Real World
- CH 6 Ready to Ride



0% progress 100%

MY ACCOUNT

PROVIDE FEEDBACK

LOG OUT

Text On

Text Off

Pat Hahn

MY DASHBOARD ▶

MY COURSE ▶

- ✓ CH 1 Riding Gear
- ✓ CH 2 Motorcycle Controls
- ✓ CH 3 Taking Control
- ✓ CH 4 Riding Skills
- CH 5 Riding in the Real World
- CH 6 Ready to Ride



0% progress 100%

MY ACCOUNT ▶

PROVIDE FEEDBACK ▶

LOG OUT ▶

Chapter 4 of 6 **Riding Skills - Cornering: Countersteering**



Save and Exit

Click 'Start' to watch the video, then click on the handlebars to demonstrate countersteering.



Success

Next

Text On

Text Off

Chapter 6 of 6 Ready to Ride - Final Activity - Think Like a Motorcyclist



Save and Exit

Click 'Start' to watch the video, then watch the demo and follow the directions to play the card game.

Pat Hahn

MY DASHBOARD

MY COURSE

- ✓ CH 1 Riding Gear
- ✓ CH 2 Scooter Controls
- ✓ CH 3 Taking Control
- ✓ CH 4 Riding Skills
- ✓ CH 5 Riding in the Real World
- ✓ CH 6 Ready to Ride



0% progress 100%

MY ACCOUNT

PROVIDE FEEDBACK

LOG OUT

Motorcycle Riding Gear Type of Ride Conditions



Deal

			?	?
--	--	--	---	---

Next

Text On

Text Off

Chapter 6 of 6 Ready to Ride - Final Activity - Think Like a Motorcyclist



Save and Exit

Click 'Start' to watch the video, then watch the demo and follow the directions to play the card game.

Pat Hahn

MY DASHBOARD

MY COURSE

- ✓ CH 1 Riding Gear
- ✓ CH 2 Scooter Controls
- ✓ CH 3 Taking Control
- ✓ CH 4 Riding Skills
- ✓ CH 5 Riding in the Real World
- ✓ CH 6 Ready to Ride



0% progress 100%

MY ACCOUNT

PROVIDE FEEDBACK

LOG OUT

Motorcycle Riding Gear Type of Ride Conditions



Scooter



Sport Bike



Tourer



Deal



Cruiser



Next

Text On

Text Off

Chapter 6 of 6 Ready to Ride - Final Activity - Think Like a Motorcyclist



Save and Exit

Click 'Start' to watch the video, then watch the demo and follow the directions to play the card game.

Pat Hahn

MY DASHBOARD

MY COURSE

- ✓ CH 1 Riding Gear
- ✓ CH 2 Scooter Controls
- ✓ CH 3 Taking Control
- ✓ CH 4 Riding Skills
- ✓ CH 5 Riding in the Real World
- ✓ CH 6 Ready to Ride



0% progress 100%

MY ACCOUNT

PROVIDE FEEDBACK

LOG OUT

Motorcycle Riding Gear Type of Ride Conditions



Scooter

Sport Bike

Tourer



High-Viz

Low-Viz

Low-Viz



Deal



Cruiser



Med/Low-Viz



Next

Text On

Text Off

Chapter 6 of 6 Ready to Ride - Final Activity - Think Like a Motorcyclist



Save and Exit

Click 'Start' to watch the video, then watch the demo and follow the directions to play the card game.

Pat Hahn

MY DASHBOARD

MY COURSE

- ✓ CH 1 Riding Gear
- ✓ CH 2 Scooter Controls
- ✓ CH 3 Taking Control
- ✓ CH 4 Riding Skills
- ✓ CH 5 Riding in the Real World
- ✓ CH 6 Ready to Ride



0% progress 100%

MY ACCOUNT

PROVIDE FEEDBACK

LOG OUT

Motorcycle Riding Gear Type of Ride Conditions



Scooter



Sport Bike



Tourer



High-Viz



Low-Viz



Low-Viz



Commuting



Solo Ride



Touring



Deal



Cruiser



Med/Low-Viz



Group Ride

?

?

Next

Chapter 6 of 6 Ready to Ride - Final Activity - Think Like a Motorcyclist



Save and Exit

Click 'Start' to watch the video, then watch the demo and follow the directions to play the card game.

Pat Hahn

MY DASHBOARD

MY COURSE

- ✓ CH 1 Riding Gear
- ✓ CH 2 Scooter Controls
- ✓ CH 3 Taking Control
- ✓ CH 4 Riding Skills
- ✓ CH 5 Riding in the Real World
- ✓ CH 6 Ready to Ride



0% progress 100%

MY ACCOUNT

PROVIDE FEEDBACK

LOG OUT

Motorcycle Riding Gear Type of Ride Conditions



Scooter

Sport Bike

Tourer



High-Viz

Low-Viz

Low-Viz



Commuting

Solo Ride

Touring



Deal



Cruiser



Med/Low-Viz



Group Ride



Peer Pressure



Alcohol

Next

Text On

Text Off

Chapter 6 of 6 Ready to Ride - Final Activity - Think Like a Motorcyclist

Save and Exit



Click 'Start' to watch the video, then watch the demo and follow the directions to play the card game.

Pat Hahn

MY DASHBOARD

MY COURSE

- ✓ CH 1 Riding Gear
- ✓ CH 2 Scooter Controls
- ✓ CH 3 Taking Control
- ✓ CH 4 Riding Skills
- ✓ CH 5 Riding in the Real World
- ✓ CH 6 Ready to Ride



0% progress 100%

MY ACCOUNT

PROVIDE FEEDBACK

LOG OUT



Cruiser



Med/Low-Viz



Group Ride



Alcohol



Peer Pressure

Your Situation

Couple of drinks after work, friend stops by for a ride

It was a long day at work, so you were pretty excited to get home and have a drink or two. Shortly after you finish your second drink, a couple of your friends stop by. They're headed out for a ride and are hoping you'll join them. What's the best choice?

- Grab your helmet and hit the road!
- Turn down the invitation and promise to join them another time.
- Let your friends know that you'd love to join them, but they'll need to wait an hour.

Next

Text On

Text Off

Chapter 3 of 6 Taking Control - Real-time Scanning: Scored



Save and Exit

Watch the demo, follow the instructions and click on the clue or hazard when the video stops.



Next

Pat Hahn

MY DASHBOARD



MY COURSE



- ✓ CH 1 Riding Gear
- ✓ CH 2 Motorcycle Controls
- ✓ CH 3 Taking Control
- ✓ CH 4 Riding Skills
- CH 5 Riding in the Real World
- CH 6 Ready to Ride



0% progress 100%

MY ACCOUNT



PROVIDE FEEDBACK



LOG OUT



Text On

Text Off

Pat Hahn, 541-737-9113, pat.hahn@oregonstate.edu

Pat Hahn

MY DASHBOARD

MY COURSE

- ✓ CH 1 Riding Gear
- ✓ CH 2 Motorcycle Controls
- ✓ CH 3 Taking Control
- ✓ CH 4 Riding Skills
- CH 5 Riding in the Real World
- CH 6 Ready to Ride



0% progress 100%

MY ACCOUNT

PROVIDE FEEDBACK

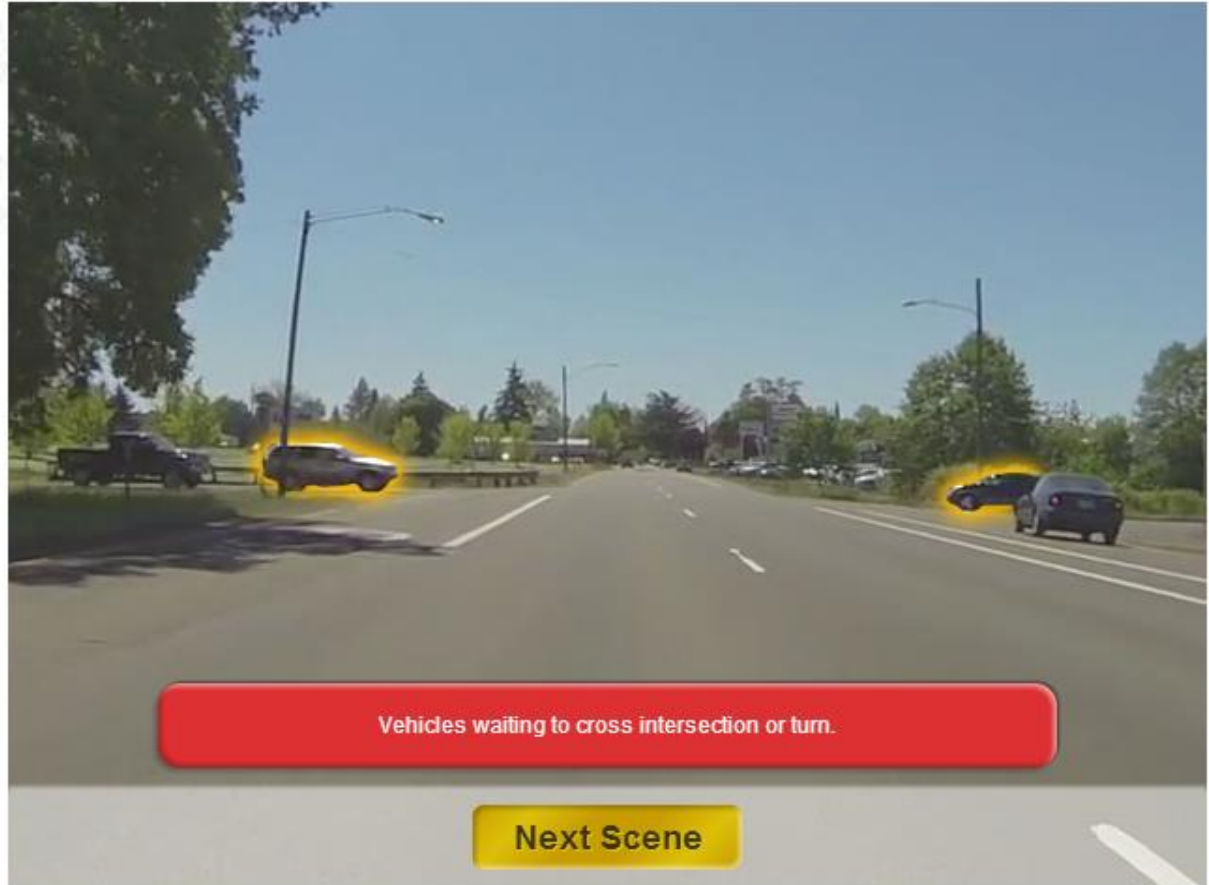
LOG OUT

Chapter 3 of 6 Taking Control - Real-time Scanning: Scored



Save and Exit

Watch the demo, follow the instructions and click on the clue or hazard when the video stops.



Next

Text On

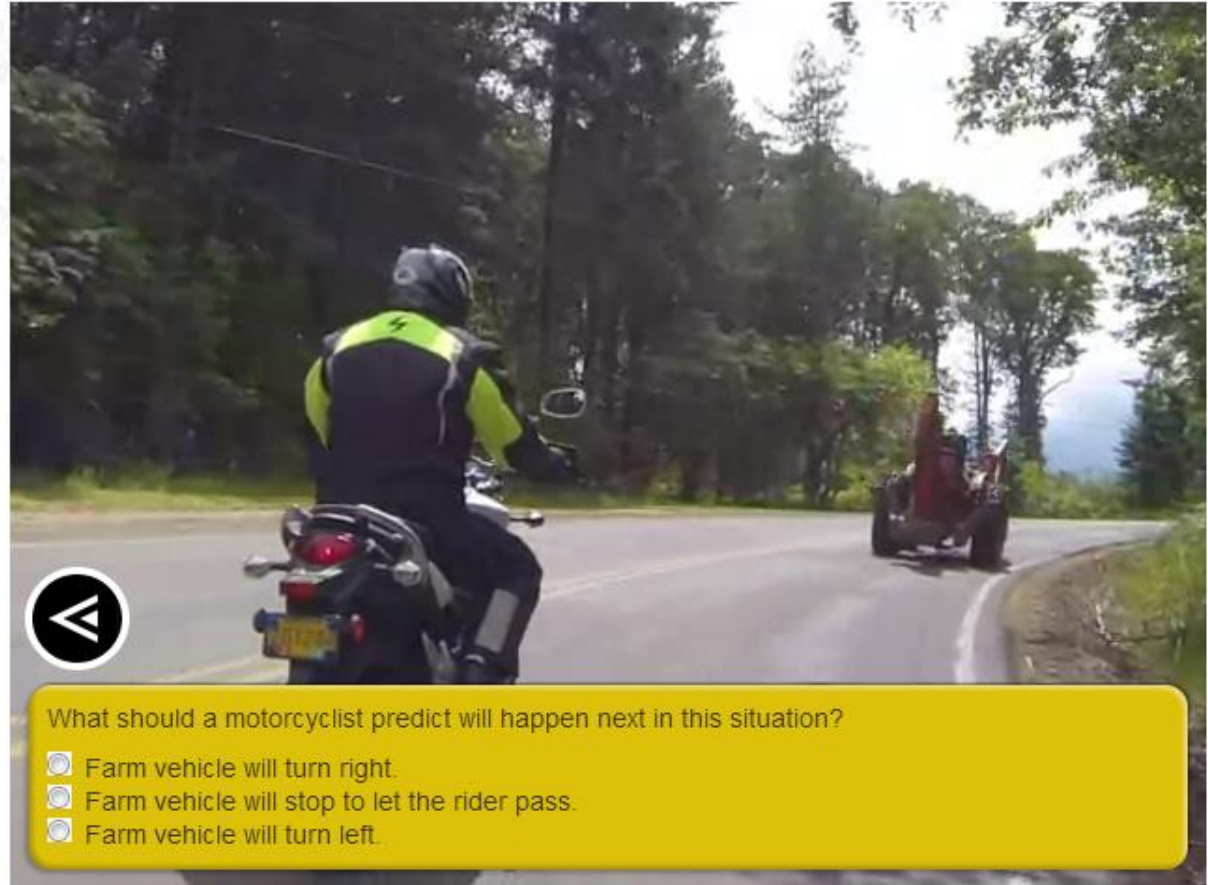
Text Off

Save and Exit

Chapter 4 of 6 Riding Skills - Final Activity - You Are the Rider



Click 'Start' to watch the video and answer questions periodically about the ride.



What should a motorcyclist predict will happen next in this situation?

- Farm vehicle will turn right.
- Farm vehicle will stop to let the rider pass.
- Farm vehicle will turn left.

Next

Pat Hahn

MY DASHBOARD

MY COURSE

- ✓ CH 1 Riding Gear
- ✓ CH 2 Motorcycle Controls
- ✓ CH 3 Taking Control
- ✓ CH 4 Riding Skills
- CH 5 Riding in the Real World
- CH 6 Ready to Ride



0% progress 100%

MY ACCOUNT

PROVIDE FEEDBACK

LOG OUT

Text On

Text Off

Chapter 4 of 6 Riding Skills - Final Activity - You Are the Rider

Save and Exit



Click 'Start' to watch the video and answer questions periodically about the ride.

Pat Hahn

MY DASHBOARD

MY COURSE

- ✓ CH 1 Riding Gear
- ✓ CH 2 Motorcycle Controls
- ✓ CH 3 Taking Control
- ✓ CH 4 Riding Skills
- CH 5 Riding in the Real World
- CH 6 Ready to Ride



0% progress 100%

MY ACCOUNT

PROVIDE FEEDBACK

LOG OUT



Farm vehicle will turn left.

This is the safest and best prediction. A slow-moving vehicle on a rural road is often traveling only a short distance and will likely turn soon. Be patient!

Continue

Next

Text On

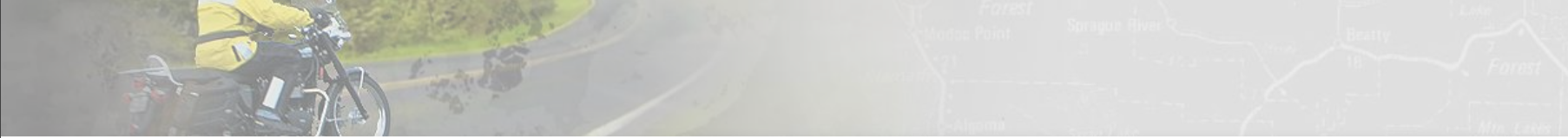
Text Off

Pat Hahn, 541-737-9113, pat.hahn@oregonstate.edu

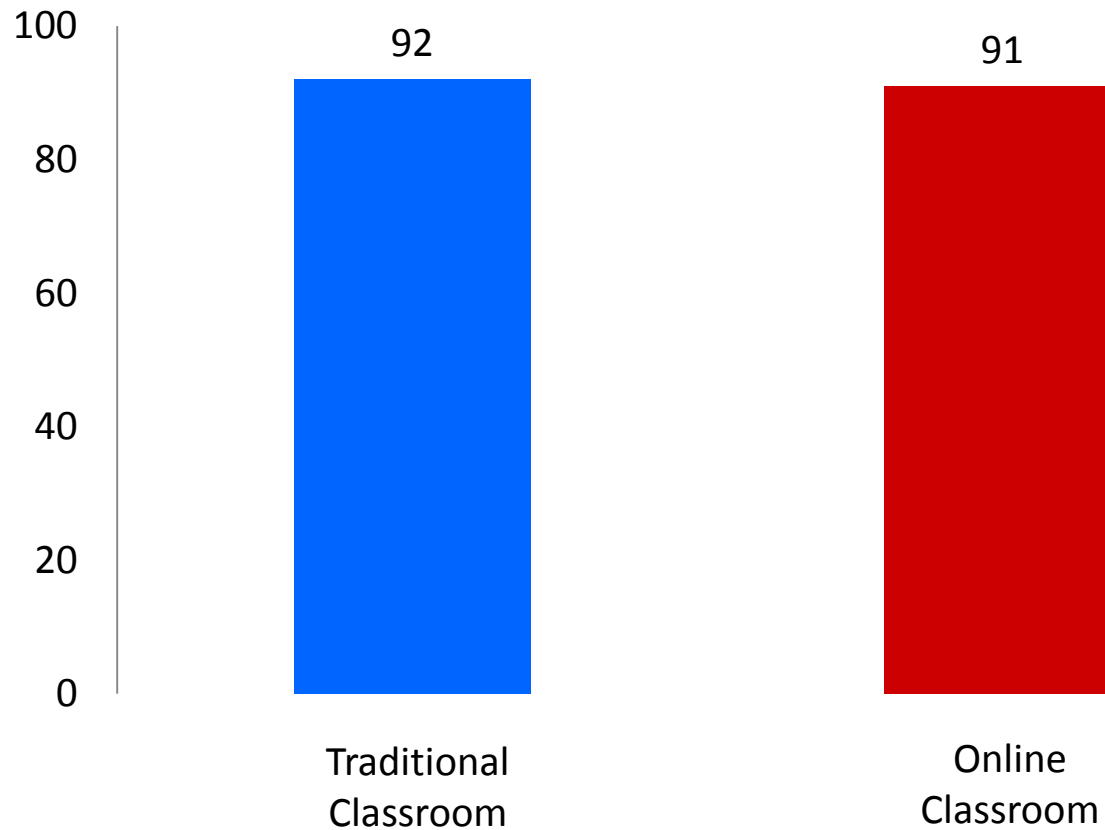
Field Test

1. 477 online students vs. 646 control group
2. Average time to completion: 4.5 hours (from 7)
3. Performance measures:
 - Test scores
 - Evaluation forms
 - Pre/post surveys



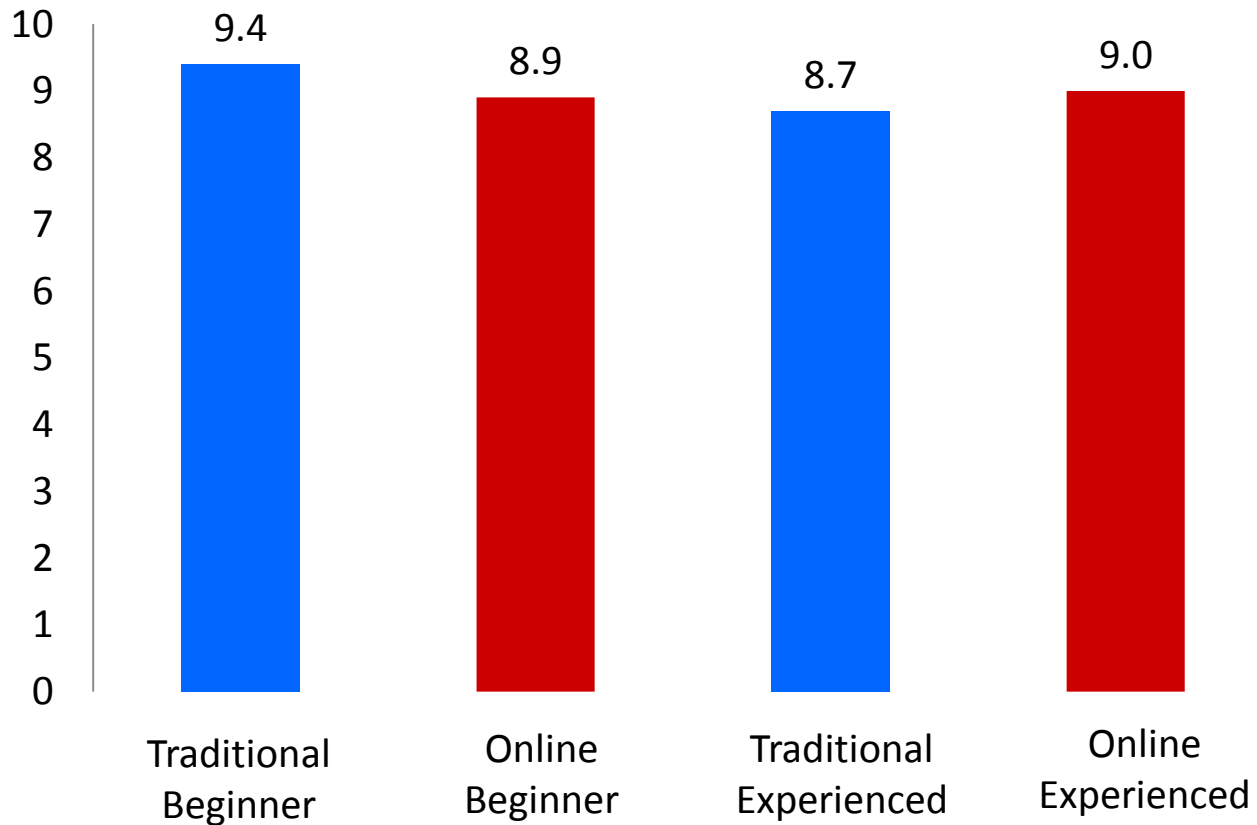


Test Scores

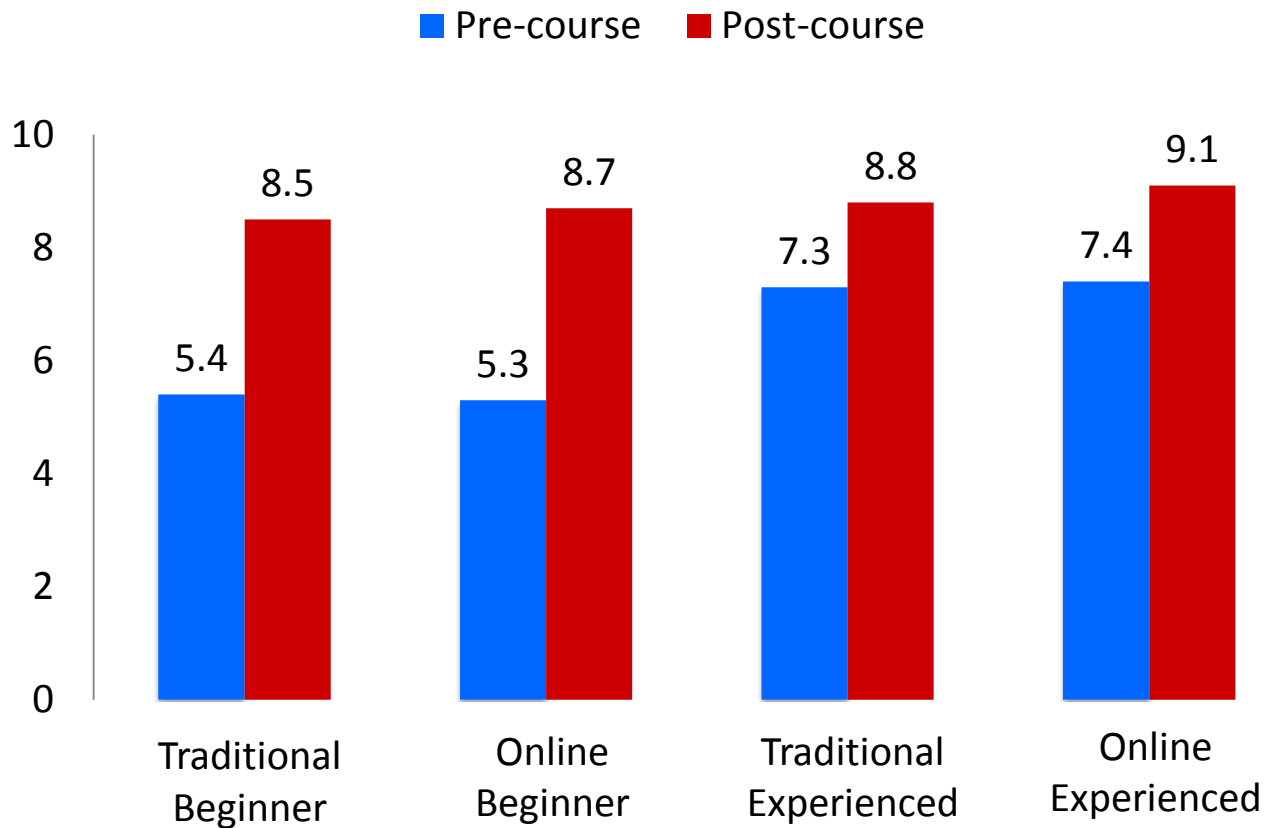


Course Evaluations

The classroom presentation improved my knowledge
1-Disagree 10-agree



Pre/Post Surveys



eRider™ Summary

1. Started from scratch
2. Focused on priorities
3. Need to know now
4. Reduced time by 1/3
5. Test scores same
6. Outcomes same





Pat.Hahn@oregonstate.edu